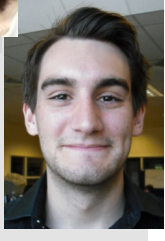




SCoRE-news

FIRST 30 SCHOOLS SIGNED UP!

Frances Bowen
Eco-Schools Resource
Efficiency Officer
(South Lincolnshire)
01522 554837
07785 342675
frances.bowen@lincolnshire.gov.uk



Jonathan Parkin
Eco-Schools Resource
Efficiency Officer
(North Lincolnshire)
01522 552003
07785 340686
jonathan.parkin@lincolnshire.gov.uk

Happy New Year from the Sustainability Team! We hope that you had a very relaxing Christmas and are refreshed for the new term ahead.

SCoRE, an educational Programme aimed at bringing sustainability into schools, is being rolled out across Lincolnshire and is starting to gain momentum - with our first 30 schools signed up and ready for action. SCoRE received a lot of interest last year and we would like to say a special thank you to the Mouchel Schools Bulletin, the CfBT PSHEE Newsletter and the Blue Marble Magazine for raising awareness of the Programme. The Sustainability Team here at LCC are very much looking forward to working with the new schools this year.

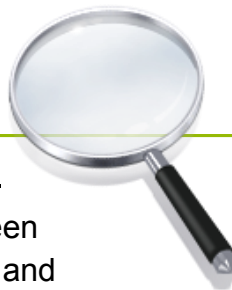
THE SCHOOLS...

The first SCoRE schools will be starting this Spring Term in the areas of Lincoln, Boston and Gainsborough. We are working in geographical clusters of schools consisting of a Secondary (which acts as a central hub) and their local feeder primary schools. During SCoRE, schools come together to participate in the Lincolnshire Carbon Ambassador (LCA) training day - this is when 3 specially selected students will be trained on how to conduct an energy audit of their school building. The LCAs also learn how to formulate an Action Plan to minimise energy consumption in their school and raise awareness of environmental issues. So far we have been attracting a wide range of interest from all over the county and we aim to reach all schools over the course of the next 4 years.

Top Tips for the Spring Term

- Check to see if your computers were left on over Christmas - how can you stop this happening?
- Ensure leftover wrapping paper and cards are re-used next year! Why not try cutting these up and using them as gift tags?
- Boiler controls - is your boiler on frost protection for the cold months ahead?

SCoRE Case Study



Welton St Mary's CofE Primary School

Welton St Mary's CofE Primary School have been engaged with SCoRE over the last few months and have really shown commitment to the Programme. They have been absolutely fantastic to work with, allowing us to trial and develop some of our resources - at the same time that we have fast-tracked them through the SCoRE process.

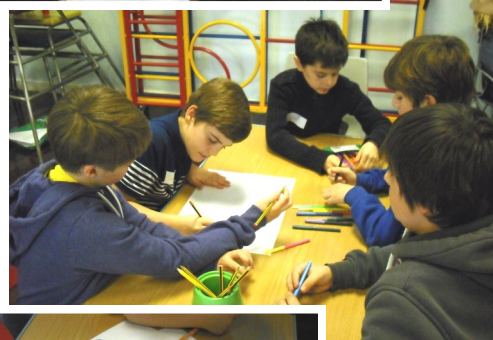
Their 12 LCAs have not only been passionate and enthusiastic about their school but also very knowledgeable about sustainability issues.

We held a successful training day that involved activities such as the 'Greenhouse Effect role-play', when students learn about the principles of the greenhouse effect in a fun and interactive way. The LCAs also learnt how to conduct an energy audit of their school, putting our new and improved energy audit cards to the test.

All of the activities helped to raise important questions such as "how do we use energy in this school?" and "how can it be improved?". Welton St Mary's are currently working on their Action Plan.



Making an Action Plan



Upcoming Dates

- 21st Jan - 1st Feb - Big Schools' Birdwatch
- 14th - 21st Feb - National Nest Box Week
- 4th - 10th Mar - Climate Week
- 11th - 17th Mar - Waste Week
- 21st Mar - World Forestry Day
- 22nd Mar - World Water Day

**Sign up your school now!
Register your interest at:**

sustainability@lincolnshire.gov.uk

*Has your school benefitted from SCoRE? We invite you to showcase your good practice in future editions of **SCoRE-news**. Please contact either Frances or Jonathan.*

Find out about Lincolnshire's Sustainable Schools